

2D Floor Plan Software

Making Colored Floor Plans

This information is in addition to the fast start training materials, it specifically relates to the use of colour, textures, materials and importing pictures to use in the floor plan design.

If after reading these instructions you have any questions email sales@developer3d.com

Line Options

There is a number of formatting options available for Lines & Shapes.

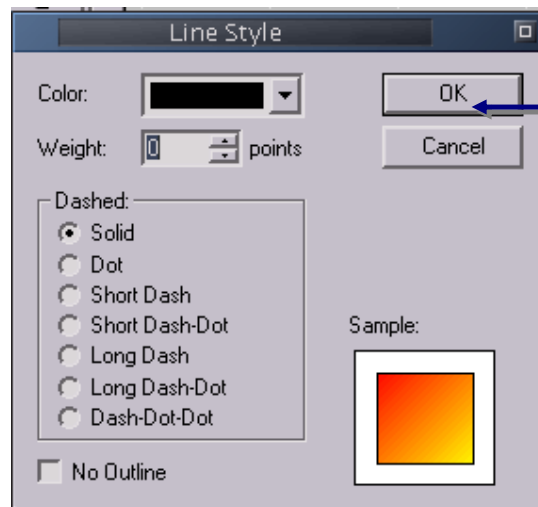
Select the Line to format and right click. From the menu move your mouse to 'Line'

There are two Options

- Options
- Arrows

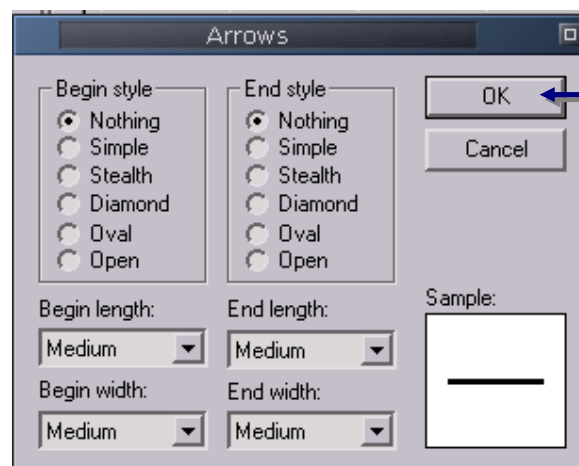
'Options' open the Line Style popup window and you can choose:

- The line colour
- The line Thickness (Weight)
- The Style Of The Line (Dashed)



The No Outline option is for shapes like rectangles this allows you to have a shape filled with colour or a picture and have no outline (border)

'Arrows' opens the Arrows popup window and you can choose an arrow head of various styles for the beginning & end of the line.



Fill Options

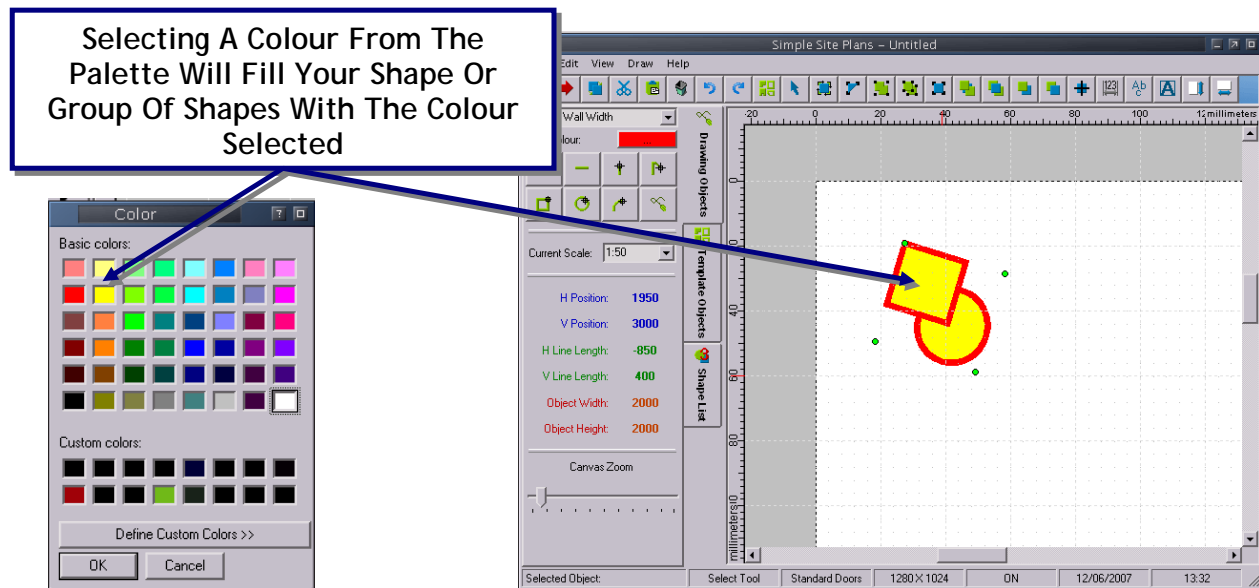
There are a number of Fill options available for Shapes.

Select the shape to fill and right click. From the menu move your mouse to 'Fill...'

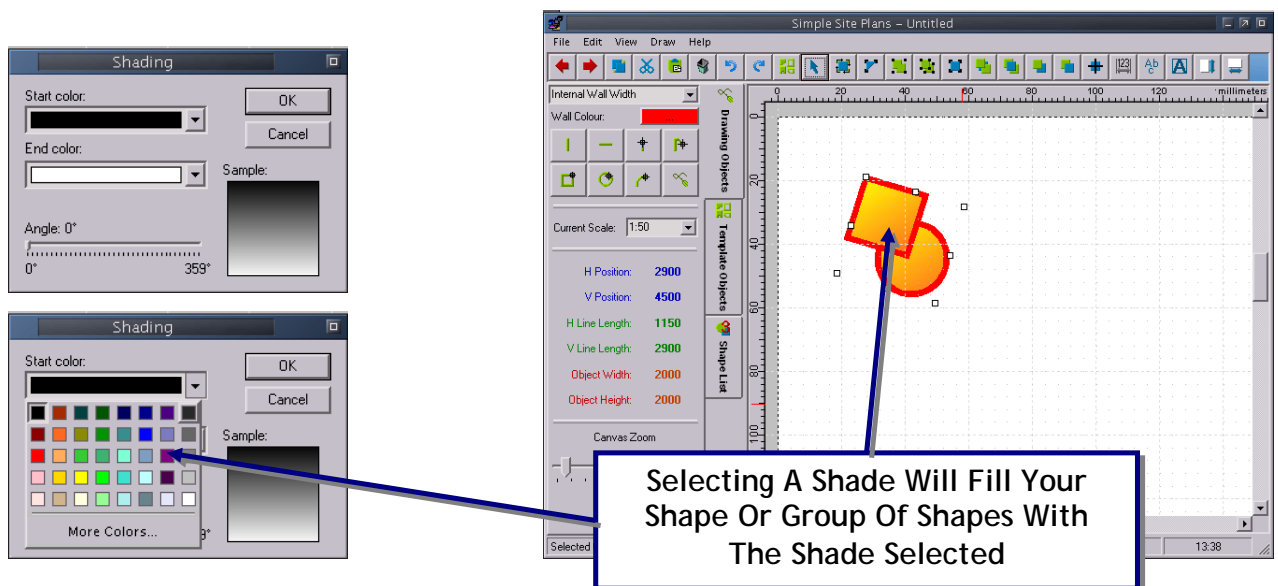
There are Four Options

- Colour...
- Shade...
- Pattern...
- Texture...

Colour will show a standard windows colour selection palette.

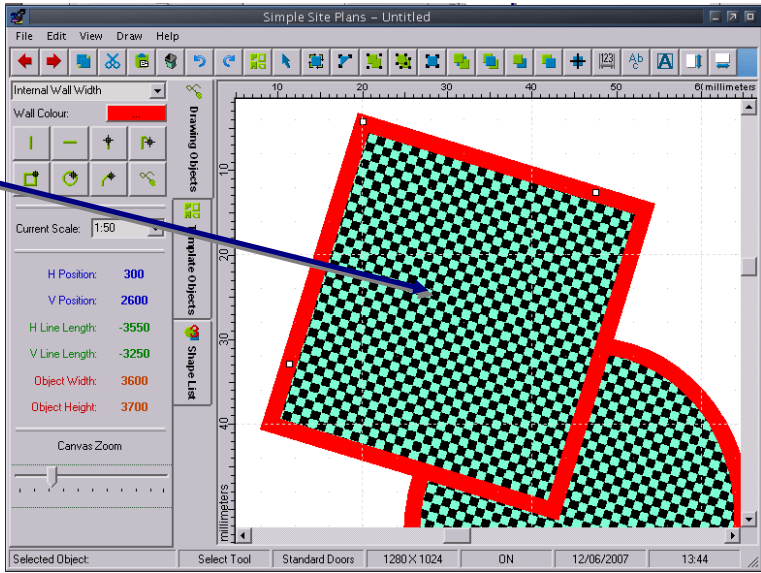
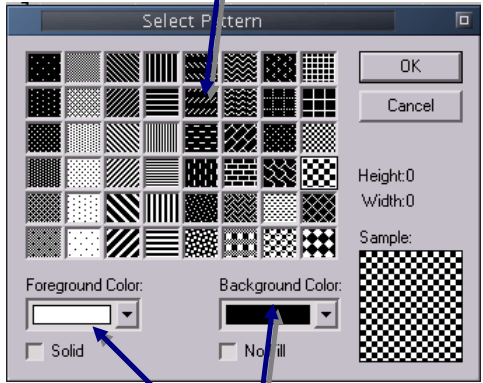


Shade will show the shape colour gradient window.



Pattern will allow you to fill a shape with one of the pre-defined patterns

Choose The Pattern And Click OK.
The Selected Shape Or Group Of
Shapes Will Be Filled In With The
Selected Pattern.



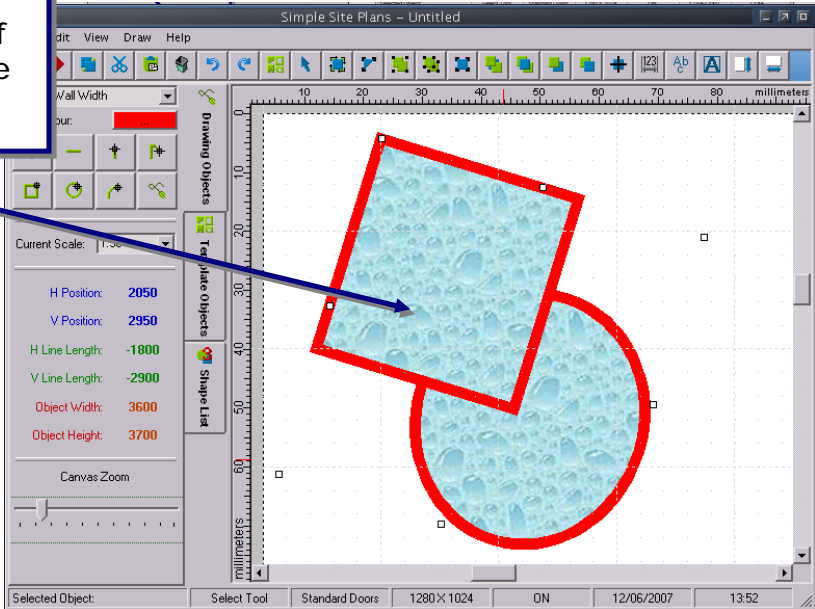
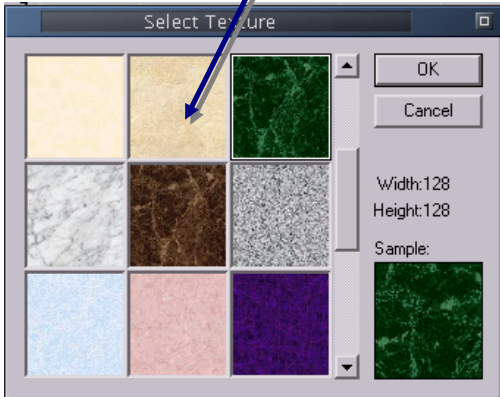
The Colour For The Pattern Can Be
Set Here

Points to note about the use of patterns.

You must remove the Tick out of Solid (default is ticked) and there must be no tick in the No Fill option

Texture will allow you to fill a shape with one of the pre-defined Textures

Choose A Texture And Click OK.
The Selected Shape Or Group Of
Shapes Will Be Filled In With The
Selected Texture.



Shadow Options

There are number of Shadow options available for Shapes.

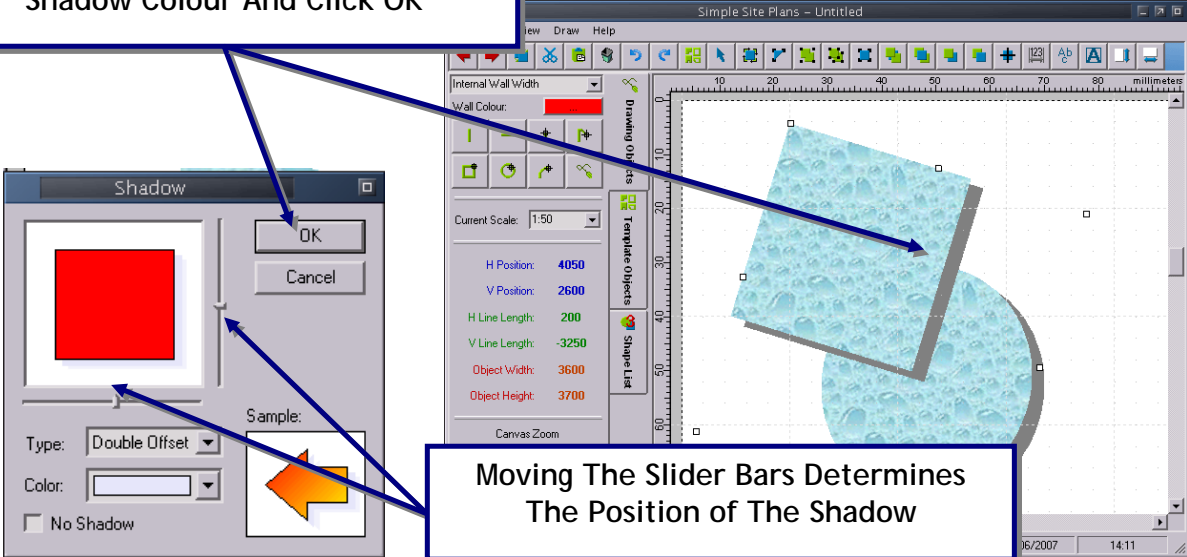
Select the shape to create a shadow for and right click. From the menu move your mouse to 'Shadow...'

There are Two Options

- Options...
- Lens Effects...

Options will allow you to create a shadow for the selected shape.

Select The Type Of Shadow And The Shadow Colour And Click OK



Moving The Slider Bars Determines The Position of The Shadow

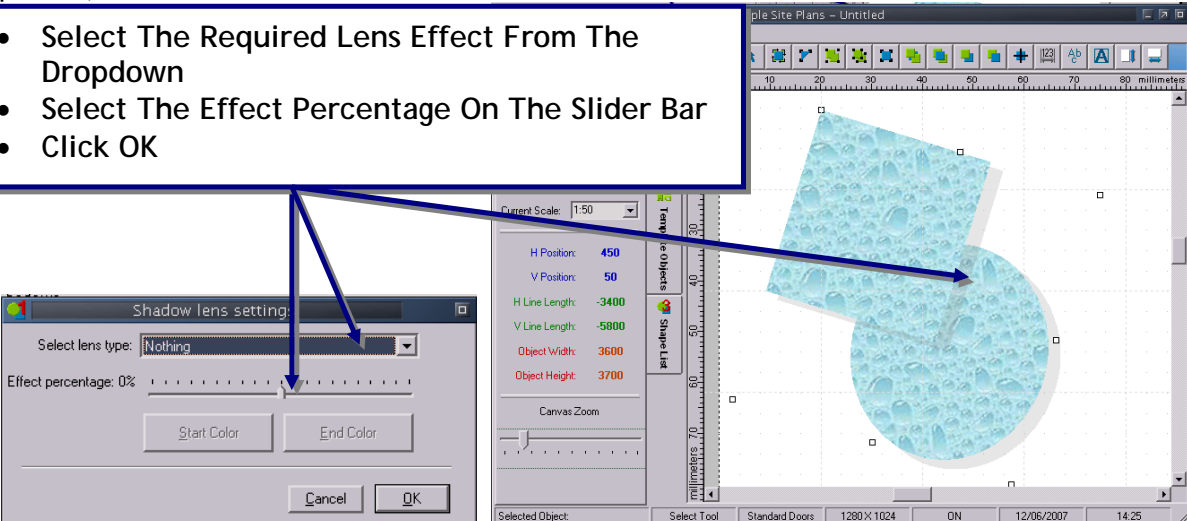
The image shows a software interface with a 'Shadow' dialog box and a 'Shadow lens setting' dialog box. The 'Shadow' dialog box has a 'Type' dropdown set to 'Double Offset', a 'Color' dropdown, and a 'No Shadow' checkbox. The 'Shadow lens setting' dialog box has a 'Select lens type' dropdown set to 'Nothing' and an 'Effect percentage' slider set to 0%. The software interface shows a blue textured shape with a shadow cast to its right. A text box with a blue border contains the text 'Select The Type Of Shadow And The Shadow Colour And Click OK' with arrows pointing to the 'Type' and 'Color' dropdowns and the 'OK' button. Another text box with a blue border contains the text 'Moving The Slider Bars Determines The Position of The Shadow' with arrows pointing to the 'Effect percentage' slider and the shadowed shape.

Points to note about Shadows.

You must remove the Tick out of No Shadow (default is ticked)

Shadow Lens Effects allows you to format the applied shadow (for example make the shadow transparent)

- Select The Required Lens Effect From The Dropdown
- Select The Effect Percentage On The Slider Bar
- Click OK



The image shows a software interface with a 'Shadow lens setting' dialog box and a 'Shadow' dialog box. The 'Shadow lens setting' dialog box has a 'Select lens type' dropdown set to 'Nothing' and an 'Effect percentage' slider set to 0%. The 'Shadow' dialog box has a 'Type' dropdown set to 'Double Offset', a 'Color' dropdown, and a 'No Shadow' checkbox. The software interface shows a blue textured shape with a shadow cast to its right. A text box with a blue border contains the text 'Select The Required Lens Effect From The Dropdown' with an arrow pointing to the 'Select lens type' dropdown. Another text box with a blue border contains the text 'Select The Effect Percentage On The Slider Bar' with an arrow pointing to the 'Effect percentage' slider. A third text box with a blue border contains the text 'Click OK' with an arrow pointing to the 'OK' button.